

## Green Level - Land Usage

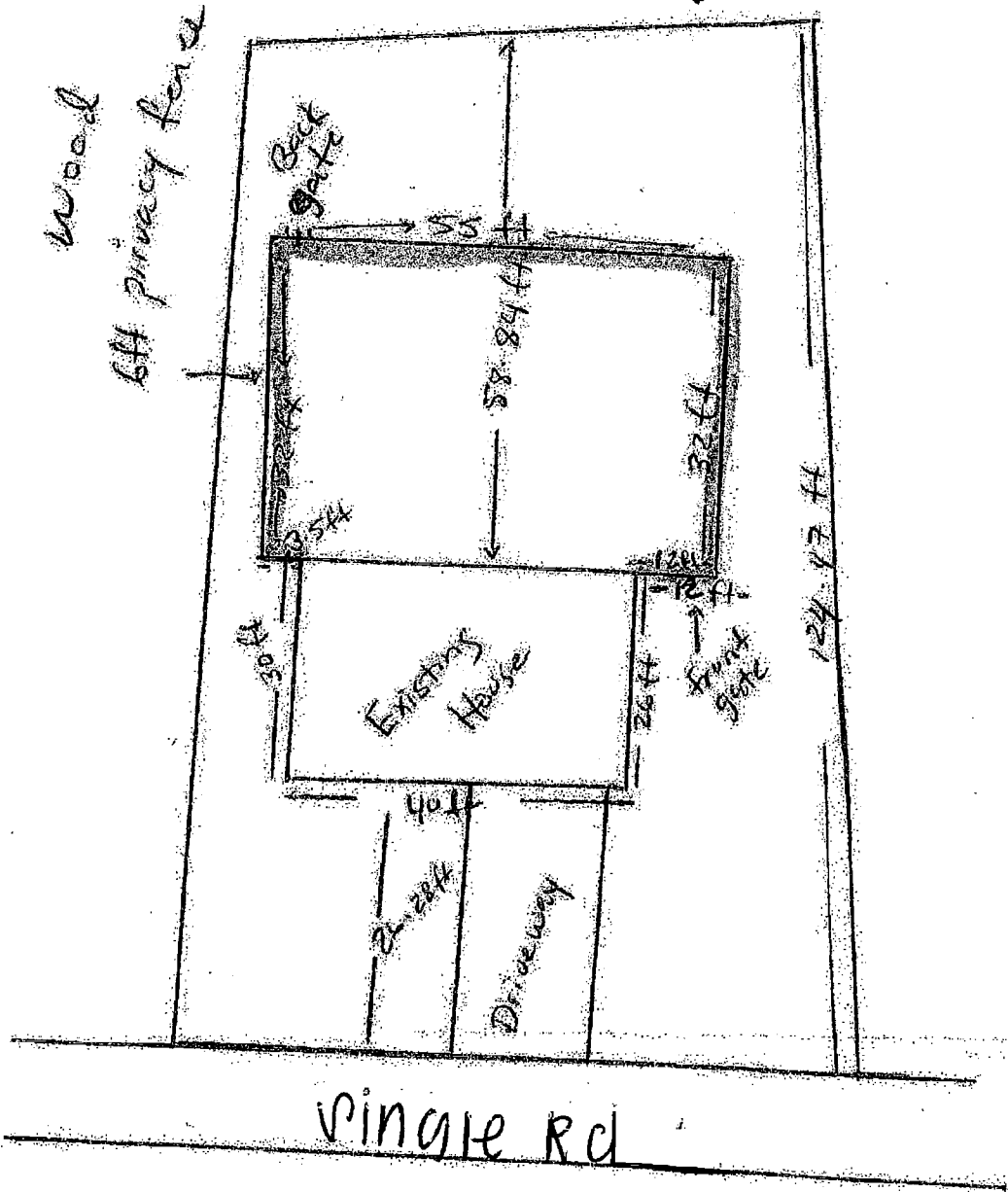
Notes for Preceding Tables:	
#1	Agricultural - Subject to the provisions of the Food Security Act of 1985 and the Food, Agriculture, Conservation and Trade Act of 1990 conducted after January 1, 1993 shall maintain a minimum 10-ft. vegetative buffer, or equivalent control as determined by the Soil and Water Conservation Commission, along all perennial waters indicated on the most recent versions of the U.S.G.S. 1:24,000 scale topographic maps as determined by local government studies. Animal operations greater than 100 animal units shall employ BMP by July 1, 1994 recommended by the Soil and Water Conservation Commission.
#2	Subject to § 153.093(F)(3)
#3	Subject to § 153.093(F)(2)
#4	Subject to § 153.093(F)(1)

(Ord. passed 2-14-1991; Ord. passed 10-14-1993; Ord. passed 4-10-1997; Ord. passed - -2002)

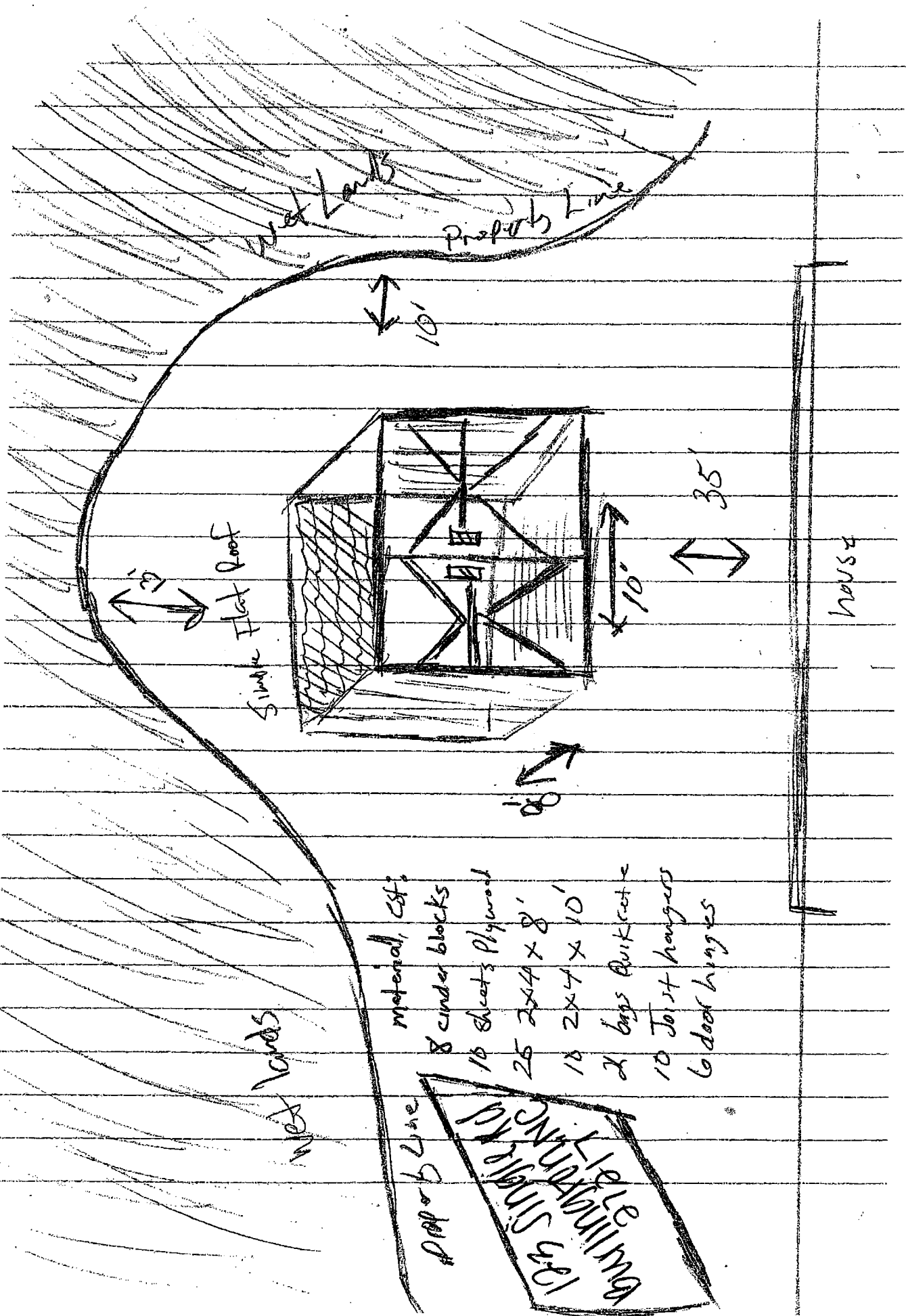
### § 153.099 TABLE OF DIMENSIONAL REQUIREMENTS.

<i>Table of Dimensional Requirements</i>							
<i>Zoning District</i>	<i>Lot Size</i>	<i>Lot Width</i>	<i>Front Yard Setback</i>	<i>Side Yard Setback</i>	<i>Rear Yard Setback</i>	<i>Height</i>	<i>Accessory Buildings</i>
R-80 (O) Watershed - Critical Area Overlay District	2 acres	100 ft.	30 ft.	15 ft.	20 ft.	35 ft.	Not in front yard; 20 ft. from lot line
R-40 (O) Watershed - Non-Critical Area Overlay	1 acre	See R-80	See R-80	See R-80	See R-80	See R-80	See R-80
R-WS Watershed District	1 acre	See R-80	See R-80	See R-80	See R-80	See R-80	See R-80
R-A Residential-Agricultural	More than 12,000 sq. ft.	80 ft.	30 ft.	10 ft.	20 ft.	35 ft.	Less than 35 ft.
R-12 Residential - General	12,000 sq. ft.	80 ft.	See R-80	10 ft.	See R-80	See R-80	See R-80
R-E Residential - Exclusive	12,000 sq. ft.	80 ft.	See R-80	10 ft.	See R-80	See R-80	See R-80
R-MP Res. - Multi-Family	6,000 sq. ft. first D.U.; 3,000 sq. ft. for each additional D.U.	See R-12	See R-80	See R-12	See R-80	See R-80	
R-MHP Manufactured Home/Mobile Home Park District	All manufactured home parks shall comply with development standards in § 153.092						

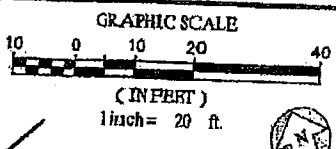
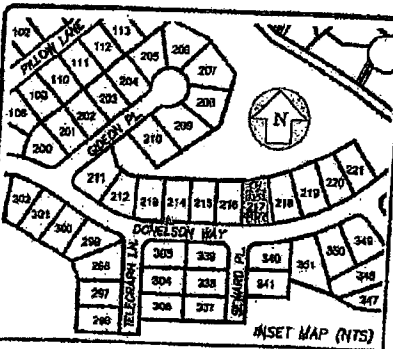
123 Single Rd  
Burlington NC 27217



SAMPLE



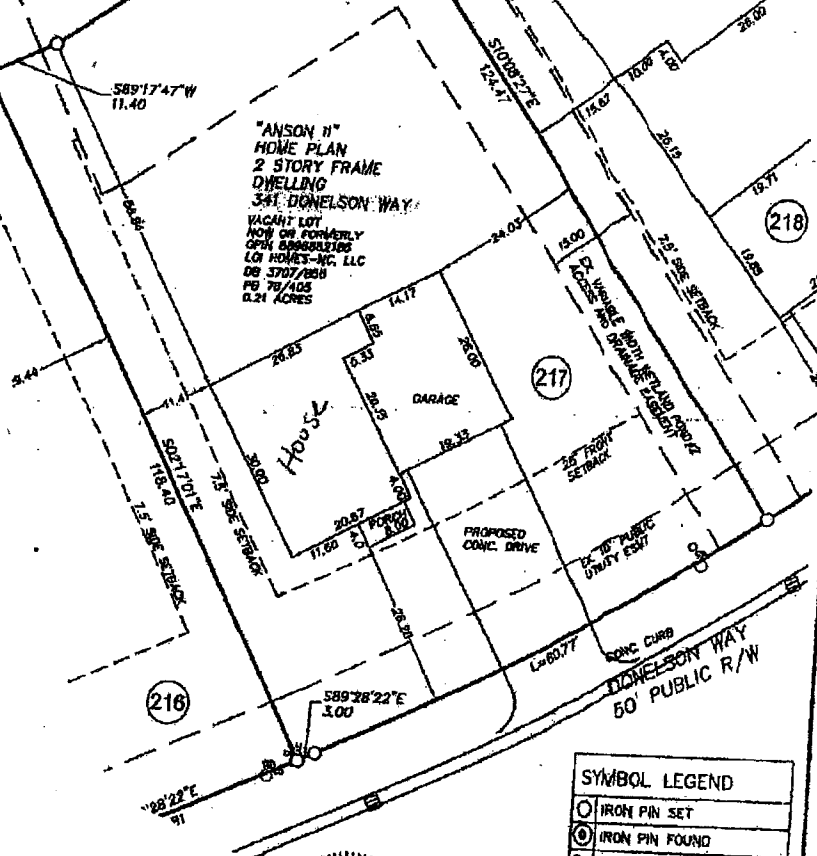
SAMPLE



USACE JURISDICTIONAL  
WETLANDS AND WETLAND  
STORM POND AREA  
NOW OR FORMERLY  
OPEN BARRIERS/ICE  
WALL PROPERTIES LLC  
DB 3078/431  
PB 77/278

USACE JURISDICTIONAL  
WETLANDS NOT TO BE  
DISTURBED  
PB 78/405

"ANSON II"  
HOME PLAN  
2 STORY FRAME  
Dwelling  
341 DONELSON WAY  
VACANT LOT  
NOW OR FORMERLY  
OPEN BARRIERS/ICE  
WALL PROPERTIES LLC  
DB 3707/855  
PB 78/405  
0.21 ACRES



SAMPLE  
PLOT

K:\2017\14-000001\Drawn Level 0\dwg\14-000001-0000-0000-0000-0000-0000.dwg, 11/7/2017 2:55:45 PM, horking, HP 8100, L2



*B. Wells* 11-7-2017

SYMBOL LEGEND	
○	IRON PIN SET
⊙	IRON PIN FOUND
⊕	SANITARY CLEANOUT
⊗	SANITARY SEWER MANHOLE
⊚	CABLE TV RISER
⊛	FIRE HYDRANT
⊜	WATER METER
⊝	WATER VALVE
⊞	STORM SEWER MANHOLE
⊟	ELECTRIC METER
⊠	STORM INLET

FOR ADDITIONAL BOUNDARY DATA, TIES, BEARING BASIS  
AND COORDINATES SEE PB 78/405.

PLOT PLAN OF LOT 217 BEDFORD HILLS  
PHASE 2B SUBDIVISION FOR  
**LGI HOMES-NC, LLC**  
HAW RIVER TWP., ALAMANCE CO., NORTH CAROLINA  
PROPERTY DESCRIBED IN DB 3707/855, PB 78/405,  
AND STANDING IN THE NAME OF  
LGI HOMES-NC, LLC.

**SUMMIT**  
DESIGN AND ENGINEERING SERVICES

Creatively Inspired - Technically Executed

License #: P-6339  
304 Meadowland Drive  
Hillsborough, NC 27278-8561  
Voice: (919) 759-3285 Fax: (919) 759-4674  
www.summitinc.net  
Summit Plot # 14-000001-0000-0000